

Escambia County is committed to making our website accessible. If you use assistive technology, for example a screen reader, and have difficulty accessing information in this agenda online, please contact our ADA Coordinator at ADA@myescambia.com or 850-595-1637

## AGENDA

### Special Joint Meeting with the Escambia County Board of Commissioners and the Escambia County District School Board Special Meeting - October 5, 2021 - 5:01 PM Ernie Lee Magaha Government Building – First Floor

1. Call to Order  
(PLEASE TURN YOUR CELL PHONE TO THE VIBRATE, SILENCE, OR OFF SETTING).
2. Pledge of Allegiance to the Flag
3. Proof of Publication  
Was the meeting properly advertised?
4. Comments - Robert Bender, Chairman, Board of County Commissioners
5. Comments - Bill Slayton, Chairman, District School Board
6. Introduction to Redistricting - Alison Rogers, County Attorney
  - I. Recommendation Concerning the Redistricting Process.  
That the Boards discuss the redistricting process. The Boards are in receipt of the 2020 Census data.
7. Overview and Presentation of Census Results, Redistricting Terms and Redistricting Software - David Stafford, Supervisor of Elections
  - I. Recommendation Concerning the Overview and Presentation of Census Results, Redistricting Terms and Redistricting Software  
  
That the Board discuss the overview and presentation of Census results, Redistricting Terms and Redistricting Software.
8. Public Comment - Three Minute Time Limit Per Speaker
9. Additional Discussion By Board Members on Map Proposals
10. Board Direction Regarding Future Meetings
11. Adjourn



**BOARD OF COUNTY COMMISSIONERS  
ESCAMBIA COUNTY, FLORIDA**

---

**MEETING DATE:** 10/5/2021

**DEPARTMENT:** County Attorney

**ITEM ID:** 2021-3391

**ITEM TYPE:** Recommendation

**FROM:** Alison Rogers, County Attorney

**SUBJECT:** Recommendation Concerning the Redistricting Process.

---

**RECOMMENDATION/REQUIRED ACTION:**

That the Boards discuss the redistricting process. The Boards are in receipt of the 2020 Census data.

---

**BACKGROUND SUMMARY:**

---

**FISCAL IMPACT:** N/A

---

**LEGAL CONSIDERATIONS/SIGN-OFF:**

N/A

---

**POLICY/REQUIREMENT FOR BOARD ACTION:**

N/A

---

**IMPLEMENTATION/COORDINATION:**

N/A

---

**ATTACHMENTS:**

1. 2021 Redistricting Timeline
  2. Final Redistricting Memorandum - Timeframe for Completion & Maximum Allowable Deviation
  3. FAC\_Spitzer\_Redistricting-February2021
-

## 2021 REDISTRICTING TIMELINE

DATE	EVENT
July-September	<ul style="list-style-type: none"> <li>• Prepare for redistricting process</li> </ul>
Mid-September	<ul style="list-style-type: none"> <li>• Supervisor of Elections to review 2020 Census data</li> <li>• Examine need to redistrict</li> <li>• County Staff prepares initial maps</li> </ul>
Thursday, September 16, 2021 9:00 a.m.	<ul style="list-style-type: none"> <li>• BCC votes at regular meeting to schedule 1<sup>st</sup> Special Joint Meeting with School Board</li> </ul>
Tuesday, October 5, 2021 5:01 p.m.	<b>1<sup>st</sup> Special Joint Meeting with School Board</b> <ul style="list-style-type: none"> <li>• Introduction to redistricting presented by Alison Rogers</li> <li>• Presentation of Census results by Supervisor of Elections</li> <li>• Decide redistricting criteria to be used</li> <li>• Vote to schedule 2<sup>nd</sup> Special Joint Meeting</li> </ul>
Tuesday, November 2, 2021 5:01 p.m.	<b>2<sup>nd</sup> Special Joint Meeting with School Board</b> <ul style="list-style-type: none"> <li>• Discuss initial maps</li> <li>• Revise and finalize maps</li> <li>• Minutes of this meeting shall memorialize accurate descriptions of the new district boundaries</li> </ul>
Immediately After 2 <sup>nd</sup> Special Joint Meeting with School Board	<ul style="list-style-type: none"> <li>• Prepare certified copy of district descriptions for advertisement in PNJ</li> </ul>
November 8-November 15, 2021	<b>Notice of Change of Boundaries advertised in PNJ</b> <ul style="list-style-type: none"> <li>• F.S. 124.02(1) provides that a certified copy of the district descriptions shall be published at least once each week for 2 consecutive weeks (two publications being sufficient) in a newspaper published in said county.</li> </ul>

**Thursday, December 2, 2021**

**BCC Adopts New District Maps at Regular Meeting**

- Proof of publication of the district descriptions shall be entered on the minutes of the Board at this time. F.S. 124.02(3)
- After this meeting, the BCC "shall cause its clerk to furnish the Department of State with a certified copy of its minutes, reflecting the description of the boundaries of the districts, as changed."



## MEMORANDUM

**To:** Alison Rogers, County Attorney  
**From:** Kia Johnson, Assistant County Attorney  
**Date:** September 27, 2021  
**Subject:** Redistricting (Timeframe for Completion & Maximum Allowable Deviation)

---

### Issues:

**(1) Whether the redistricting of county commissioner districts must be completed by the end of 2021.**

**Short Answer:** No. Although it is always ideal to complete the redistricting of county commissioner districts in an odd-numbered year, there is authority to support the completion of this redistricting in the early part of the following even-numbered year. Specifically, redistricting of the county commissioner districts initiated in 2021 may be completed in 2022 if there is ample time for residents of the newly created districts to qualify for nomination and election to the office of county commissioner in the 2022 primary and general elections.<sup>1</sup>

**(2) The maximum allowable population deviation between districts.**

**Short Answer:** Where the maximum population deviation between the largest and smallest district is less than 10%, a state or local legislative map presumptively complies with the one-person, one-vote rule.

\* \* \*

**(1) Timeframe for Completion of County Redistricting Process**

The requirement to periodically reapportion county commissioner districts originally stems from Fla. Const. Art. VIII, § 1(e), which provides as follows:

*(e) Commissioners. Except when otherwise provided by county charter, the governing body of each county shall be a board of county commissioners composed of five or seven members serving staggered terms of four years. After each decennial census the board of county commissioners shall divide the county into districts of contiguous territory as nearly equal in population as practicable. One commissioner residing in each district shall be elected as provided by law.*

---

<sup>1</sup> **Important Note:** The same flexibility does not appear to exist in the law in terms of the redistricting of *school board districts*. Fla. Stat. 1001.36(2) provides that changes to the boundaries of a school board district shall be made only in odd-numbered years. There does not appear to be any authority on the topic of extending *school board* redistricting into the following even-numbered year.

Fla. Stat. 124.01(3) is the implementing state statute for Fla. Const. Art. VIII, § 1(e) and provides as follows:

*The board of county commissioners shall **from time to time**, fix the boundaries of the above districts so as to keep them **as nearly equal in proportion to population as possible**; provided, that changes made in the boundaries of county commissioner districts pursuant to this section **shall be made only in odd-numbered years**.*

Although Fla. Stat. 124.01(3) limits redistricting to odd-numbered years, a redistricting of the county initiated in 2021 may be completed in 2022 if there is ample time for residents of the newly created districts to qualify for nomination and election to the office of county commissioner in the 2022 primary and general elections. See *Florida Op. Atty. Gen.*, 072-17, Jan. 12, 1972.

The Florida Constitutional provision respecting county redistricting, Art. VIII, § 1(e), State Const., requires the redistricting of the counties after each decennial census but contains no time limitation. The implementing statute, Fla. Stat. 124.01(3), does contain a time limitation, "...provided, that changes made in the boundaries of county commissioner districts pursuant to this section shall be made only in odd-numbered years." However, the requirement that changes in district boundaries be made in odd-numbered years was intended to give persons residing in the newly created districts ample time to decide whether to qualify for nomination and election to the office of county commissioner in such districts.

Therefore, the Florida Attorney General's Office issued the following opinion in 1972, in response to an inquiry about whether redistricting *must* occur in an odd-numbered year:

*While the answer to your question is not free from doubt, I have the view that, if the redistricting initiated in 1971 is completed in ample time for residents of the newly created districts to qualify for nomination and election to the office of county commissioners in the 1972 primary and general elections, the courts would uphold such redistricting. This ruling is in accord with the general rule that, unless the body of a statute indicates a contrary legislative intent, **mandatory words specifying the time within which duties of public officers are to be performed may be construed as directory only**.*

*Moreover, as this particular redistricting is based upon the 1970 census, **any other construction would have the effect of postponing until the general election of 1974 the election of county commissioners who would truly represent the residents of the county under the United States' Supreme Court's "one man, one vote" concept derived from the Equal Protection Clause of the Constitution**. Such a result should, of course, be avoided, if at all possible; and I have the view that, in the absence of a clear and unequivocal legislative mandate to the contrary, the*

*provision in question should be construed as authorizing the completion, during the early part of the ensuing even-numbered year, a redistricting initiated during an odd-numbered year.*

*Florida Op. Atty. Gen.*, 072-17, Jan. 12, 1972.

In light of AGO 072-17, the Orange County Board of County Commissioners has tied its 2021 redistricting deadline to the standard deadline used by the State of Florida for the redistricting of state legislative district boundaries. Orange County has taken the position that this deadline meets AGO 072-17's requirement that its decennial redistricting efforts be completed in "ample time" for residents of the newly drawn commission districts to qualify for nomination and election to the office of county commissioner in the 2022 primary and general elections. In effect, by using the State's standard redistricting deadline, Orange County has taken the good faith and reasonable position that if early March 2020 is "ample time" for state-level senate/house candidates in newly drawn legislative districts to qualify for nomination and election to office in the 2022 primary and general elections, then it is similarly "ample time" for county commissioner candidates in newly drawn commission districts to do the same on a much smaller scale than their state-level counterparts.

In addition to AGO 72-17, there is debate regarding whether Fla. Stat. 124.01 actually applies to decennial redistricting. The specific language of Fla. Stat. 124.01 states that the odd-number year requirement applies to "changes made in the boundaries of county commissioner districts pursuant to" that section. As such, the applicability of Fla. Stat. 124.01 can reasonably be read as being limited only to the "time to time" adjustments of the commission district boundaries that the counties should make pursuant to that section and not to the decennial boundary adjustments that counties instead make pursuant to the Florida Constitution. Moreover, reading Fla. Stat. 124.01 in this limited manner also ensures that its application does not force counties to violate the United States Supreme Court's 'one man, one vote' principle derived from the Equal Protection Clause of the U.S. Constitution by requiring them to postpone until the general election of 2024 ". . . the election of county commissioners who would truly represent the residents of the county."

Under the provisions of Fla. Const. Art. VIII, § 1(e) governing election of county commissioners, it is within the discretion of the board of county commissioners after a study of the decennial census figures to decide whether *existing* districts are as nearly equal as possible; judicial relief is appropriate only if the board fails to reapportion according to federal and state constitutional requisites. *Flagler County Bd. of Com'rs v. Likins*, 337 So.2d 801 (1976). Thus, if after a study of the decennial census figures a board of county commissioners determines that *existing* districts are *not* as nearly equal as possible, it would be inappropriate for the board to choose not to reapportion the districts according to federal and state constitutional requisites.

## (2) Maximum Allowable Population Deviation

“Maximum population deviation” is defined as the sum of the percentage deviations from perfect population equality of the most- and least-populated districts. *Evenwel v. Abbott*, 577 U.S. 937, 1124 (2016). Under the one-person, one-vote principle, states must draw congressional districts with populations as close to perfect equality as possible. See *Wesberry v. Saunders*, 376 U.S. 1 (1964). By ensuring that each representative is subject to the requests and suggestions from the same number of constituents, total-population apportionment promotes equitable and effective representation, consistent with the one person, one vote principle of the Equal Protection Clause. *Evenwel v. Abbott*, 577 U.S. at 1132. Where the maximum population deviation between the largest and smallest district is **less than 10%**, a state or local legislative map presumptively complies with the one-person, one-vote rule. *Evenwel v. Abbott*, 577 U.S. at 1121.

The United States Supreme Court case of *Evenwel v. Abbott* is one of many Supreme Court cases addressing the maximum allowable population deviation during the redistricting process. The Court reasoned as follows:

*Over the ensuing decades, the Court has several times elaborated on the scope of the one-person, one-vote rule. States must draw congressional districts with populations as close to perfect equality as possible. See Kirkpatrick v. Preisler, 394 U.S. 526, 530–531, 89 S.Ct. 1225, 22 L.Ed.2d 519 (1969). But, when drawing state and local legislative districts, jurisdictions are permitted to deviate somewhat from perfect population equality to accommodate traditional districting objectives, among them, preserving the integrity of political subdivisions, maintaining communities of interest, and creating geographic compactness. See Brown v. Thomson, 462 U.S. 835, 842–843, 103 S.Ct. 2690, 77 L.Ed.2d 214 (1983). Where the maximum population deviation between the largest and smallest district is less than 10%, the Court has held, a state or local legislative map presumptively complies with the one-person, one-vote rule. Ibid. Maximum deviations above 10% are presumptively impermissible. Ibid. See also Mahan v. Howell, 410 U.S. 315, 329, 93 S.Ct. 979, 35 L.Ed.2d 320 (1973) (approving a state-legislative map with maximum population deviation of 16% to accommodate the State's interest in “maintaining the integrity of political subdivision lines,” but cautioning that this deviation “may well approach tolerable limits”).*

*Evenwel v. Abbott*, 577 U.S. 937 (2016).

# Florida Association of Counties Redistricting County Commissions in 2021



Kurt Spitzer  
[kurtspitzer@ksanet.net](mailto:kurtspitzer@ksanet.net)  
[www.ksanet.net](http://www.ksanet.net)  
850-228-6212



# What and How

Redistricting is the process by which the legislative body equalizes differences in the population of districts by making adjustments to district boundaries.

Redistricting  $\neq$  Reapportionment

# Why?

Examination of the need to redistrict after each decennial census is required by Florida Constitution and Chapter 124, FS

Additional direction to redistrict may be contained in county charter

Furtheres the principal of “one person, one vote”

- 14<sup>th</sup> Amendment (1868)
- 15<sup>th</sup> Amendment (1870)
- Voting Rights Act (1965)



# General Guidelines for Redistricting



# General Guidelines

- **Equal (almost) in population**
- Don't dilute minority voting strength
- Follow census blocks
- Follow significant boundaries
- Must be contiguous
- Should be as compact as possible
- Preserve communities of interest
- May consider party affiliation

# General Guidelines

- Individual criteria and guidelines are balanced in concert with each other
- *Use common sense*



# General Guidelines - Population

As equal in population as “possible” or “practicable”

- Examine *need to adjust* after each decennial census released
- *May adjust* boundaries during any odd-numbered year

# General Guidelines - Population

As equal in population as “possible” or “practicable”

Article VIII, section 1(e):

After each decennial census the board of county commissioners **shall divide** the county into districts of contiguous territory as **nearly equal** in population as practicable.



# General Guidelines - Population

As equal in population as “possible” or “practicable”

Chapter 124, FS:

(3) The board of county commissioners shall from time to time, fix the boundaries of the above districts so as to keep them as **nearly equal in proportion to population as possible**; provided, that changes made in the boundaries of county commissioner districts pursuant to this section shall be made **only in odd-numbered years**.

# General Guidelines - Population

As equal in population as “possible” or “practicable”

Charter example:

“After each decennial census...there shall be established a county redistricting board composed of eleven members...In developing the county redistricting board's proposals...districts shall be contiguous and as **nearly equal in population as practicable.**”



# \*As equal in population as “possible” or “practicable”

Absolute population equality is impossible.

- ✓ Minimize the deviation from the mean - less than 3% over/under ideal is good

Population  $\neq$  Registered Voters

Two districts with population differences over 10 percentage points raises red flag

# \*As equal in population as "possible" or "practicable"

Two districts with population differences  $\geq 10$  percentage points raises red flag

District #	Average Population	Actual Population	Actual Deviation	Percent Deviation
1	2,952	3,108	156	5.28%
2	2,952	2,741	(211)	-7.15%
3	2,952	3,066	114	3.85%
4	2,952	3,113	161	<b>5.45%</b>
5	2,952	2,733	(219)	<b>-7.42%</b>



Deviation =  
12.87 points



# \*As equal in population as “possible” or “practicable”

Examples of possible exceptions to 10-point rule  
(with well-documented record and in concert  
with other criteria)

- ✓ To create minority influence or majority district
- ✓ To under populate high growth area of county

# Don't Dilute Minority Voting Strength

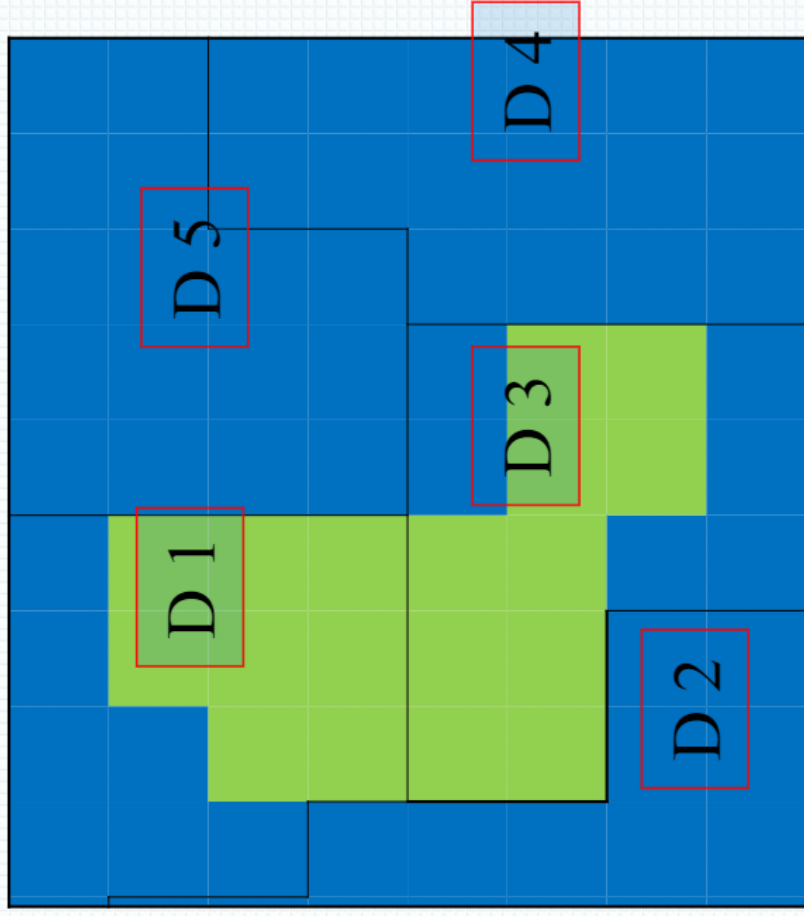
Packing – locating most of minority population into one district so as to dilute influence in other districts

Cracking – splitting minority population into two or more districts so as to dilute influence in all districts



# Don't Dilute Minority Voting Strength

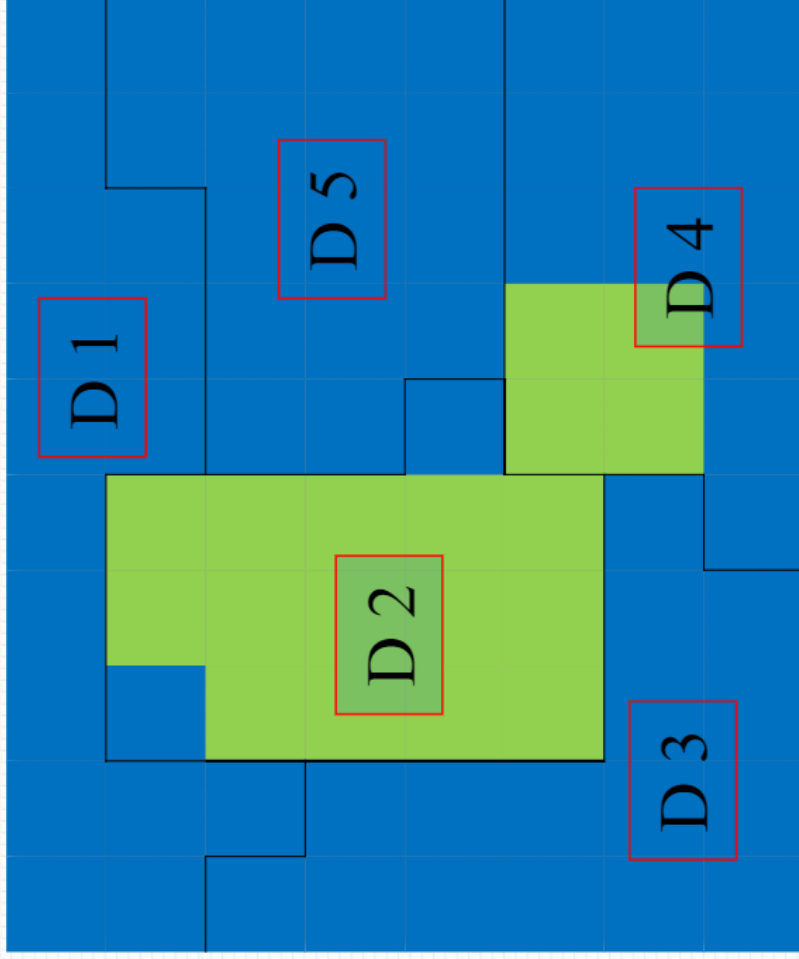
Sunshine County is 22.5% Green and 77.5% Blue. Below shows a relatively even distribution of blue and green electorate into five districts.



District	Blue %	Green %
1	50	50
2	100	0
3	40	60
4	100	0
5	100	0

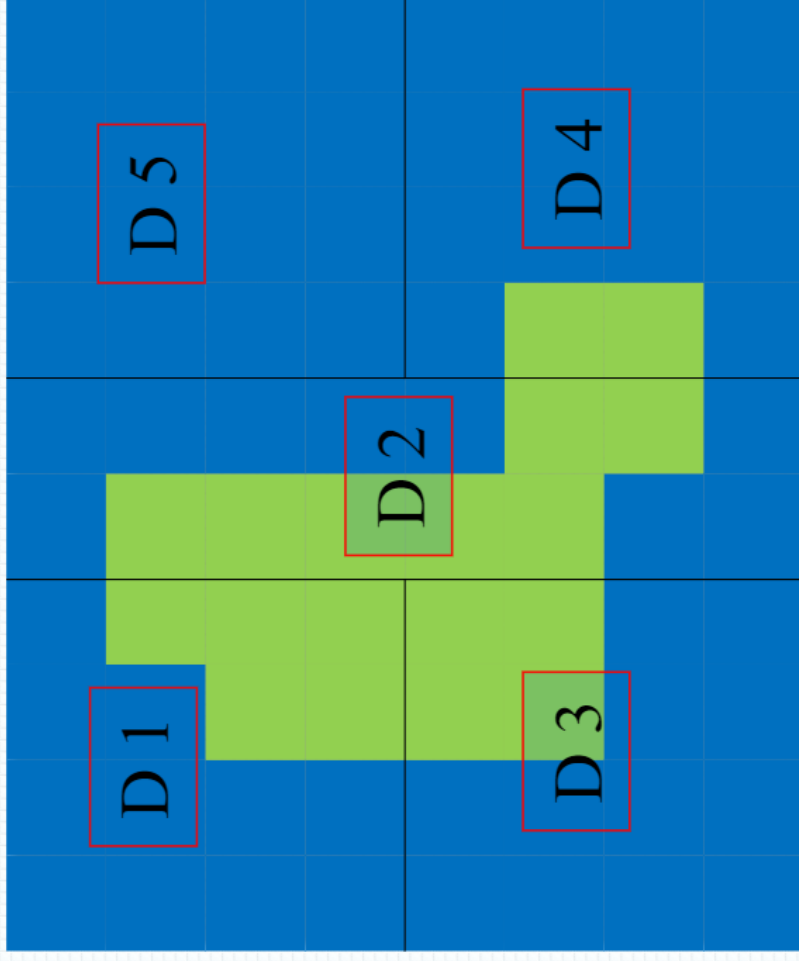
# Don't Dilute Minority Voting Strength

Packing: – 4 blue, 1 green



Green electorate concentrated in one district

Cracking: 4 blue, 1 green influence



Green electorate split among four districts



# Use Census Blocks

Readily available

Smallest unit of “building blocks”

Presumed to be valid...but look for anomalies

Total population v. 18+ years

May be altered or supplemented with other sources of data but should document valid reasons why and how

# Follow Significant Boundaries

Follow major natural or man-made boundaries – waterbodies, arterial roads, etc.

- ✓ Easier to understand
- ✓ Less disruptive to precincts
- ✓ Coterminous with census blocks

Follow existing district boundaries when possible

- ✓ Easier to understand
- ✓ Recognizes will of voters



# Other Criteria...

Individual districts must be contiguous

- ✓ Contiguity may be maintained via waterbody

Attempt to keep communities of interest together

- ✓ Cities, neighborhoods

Don't draw incumbents out of their district

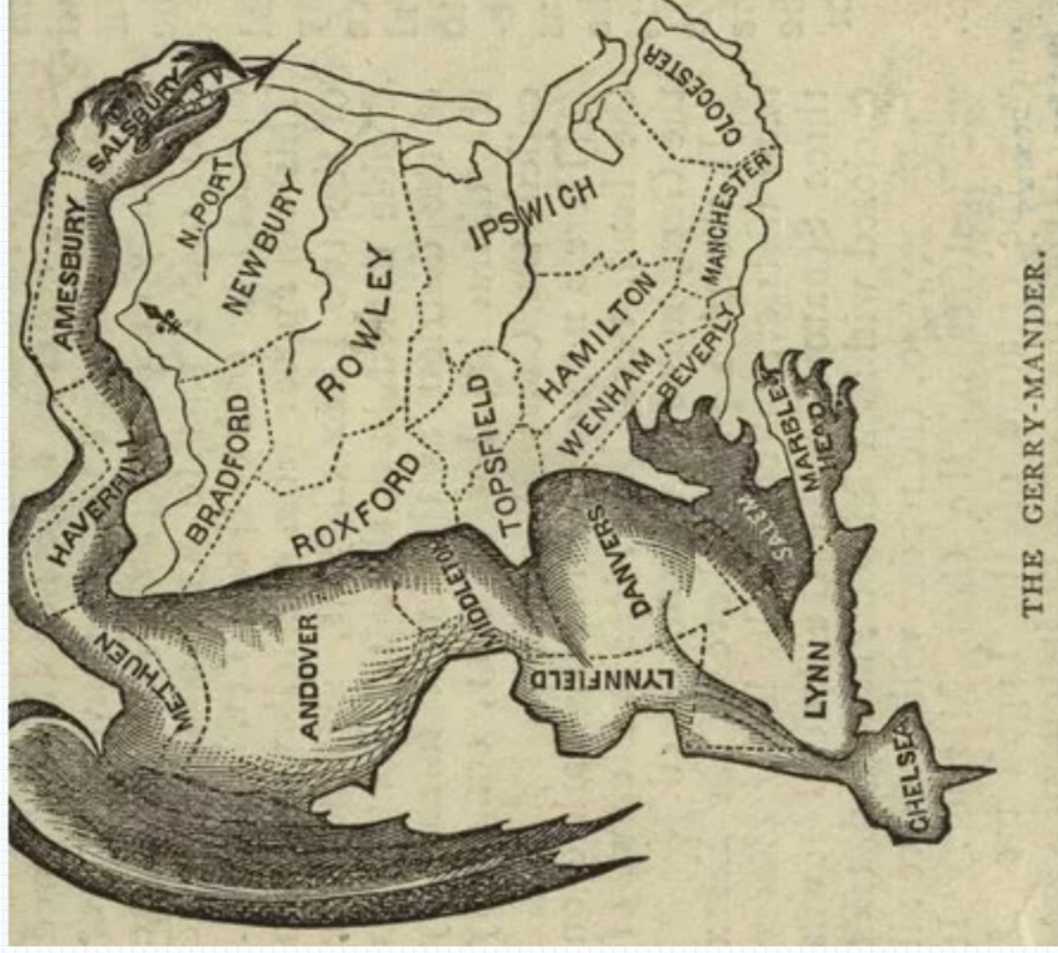
May consider party affiliation...(don't!)

Avoid districts with "bizarre" shapes

# Gerrymandering

Gov. Elbridge Gerry

- ✓ 9<sup>th</sup> Governor of Massachusetts
- ✓ 5<sup>th</sup> Vice President of US





# **North Carolina Congressional District 12**



# North Carolina

## Congressional District 12



*See Shaw v. Reno (1993).*  
Race cannot be the sole or  
predominant factor when  
redistricting.



# General Guidelines

- **Equal (almost) in population**
- Don't dilute minority voting strength
- Follow census blocks
- Follow significant boundaries
- Must be contiguous
- Should be as compact as possible
- Preserve communities of interest
- May consider party affiliation

# General Guidelines

- It is impossible for any redistricting plan to attain 100% compliance with every criteria
- Individual criteria are *balanced in concert with each other* with population being the dominant criteria



# General Guidelines

Use Common Sense!

Comparison of Plans (Total Population)																	Pop. for proposed districts						
Remains in same district										New in district							Formula Table						
Plan 5	Total	White	Black	Others	%	Total	White	Black	Others	%	Total	White	Black	Others	%	Dev.							
Dist 1	34,140	28,003	4,589	1,548	71.8%	13,439	11,615	1,263	561	28.2%	47,579	39,618	5,852	2,109	-0.65%								
Dist 2	34,764	25,250	7,889	1,625	72.3%	13,312	9,945	2,793	574	27.7%	48,076	35,195	10,682	2,199	0.39%								
Dist 3	22,354	3,607	17,919	828	46.9%	25,300	12,424	11,695	1,181	53.1%	47,654	16,031	29,614	2,009	-0.49%								
Dist 4	38,190	30,090	6,626	1,474	79.2%	10,010	7,073	2,453	484	20.8%	48,200	37,163	9,079	1,958	0.65%								
Dist 5	21,749	13,848	6,476	2,425	47.5%	26,194	17,038	8,001	1,155	54.6%	47,943	30,886	14,477	2,580	0.11%								
	151,197	100,798	43,499	7,900	63.6%	88,255	58,095	26,205	2,955	36.9%	239,452	158,893	69,704	10,855	1.3 pts								
Plan 1	Total	White	Black	Others	%	Total	White	Black	Others	%	Total	White	Black	Others	%	Dev.							
Dist 1	42,632	34,854	5,933	1,845	90.1%	4,691	4,052	377	262	9.9%	47,323	38,906	6,310	2,107	-1.18%								
Dist 2	46,659	32,735	11,752	2,172	93.5%	3,249	1,925	1,162	162	6.5%	49,908	34,660	12,914	2,334	4.21%								
Dist 3	34,887	11,221	22,212	1,454	76.1%	10,927	5,316	5,203	408	23.9%	45,814	16,537	27,415	1,862	-4.33%								
Dist 4	43,940	35,945	6,523	1,472	92.6%	3,508	2,467	884	157	7.4%	47,448	38,412	7,407	1,629	-0.92%								
Dist 5	45,337	27,962	14,793	2,582	92.6%	3,622	2,416	865	341	7.4%	48,959	30,378	15,658	2,923	2.23%								
	213,455	142,717	61,213	9,525	89.1%	25,997	16,176	8,491	1,330	10.9%	239,452	158,893	69,704	10,855	8.54 pts								

# Case Studies



# Case Studies – Jefferson County

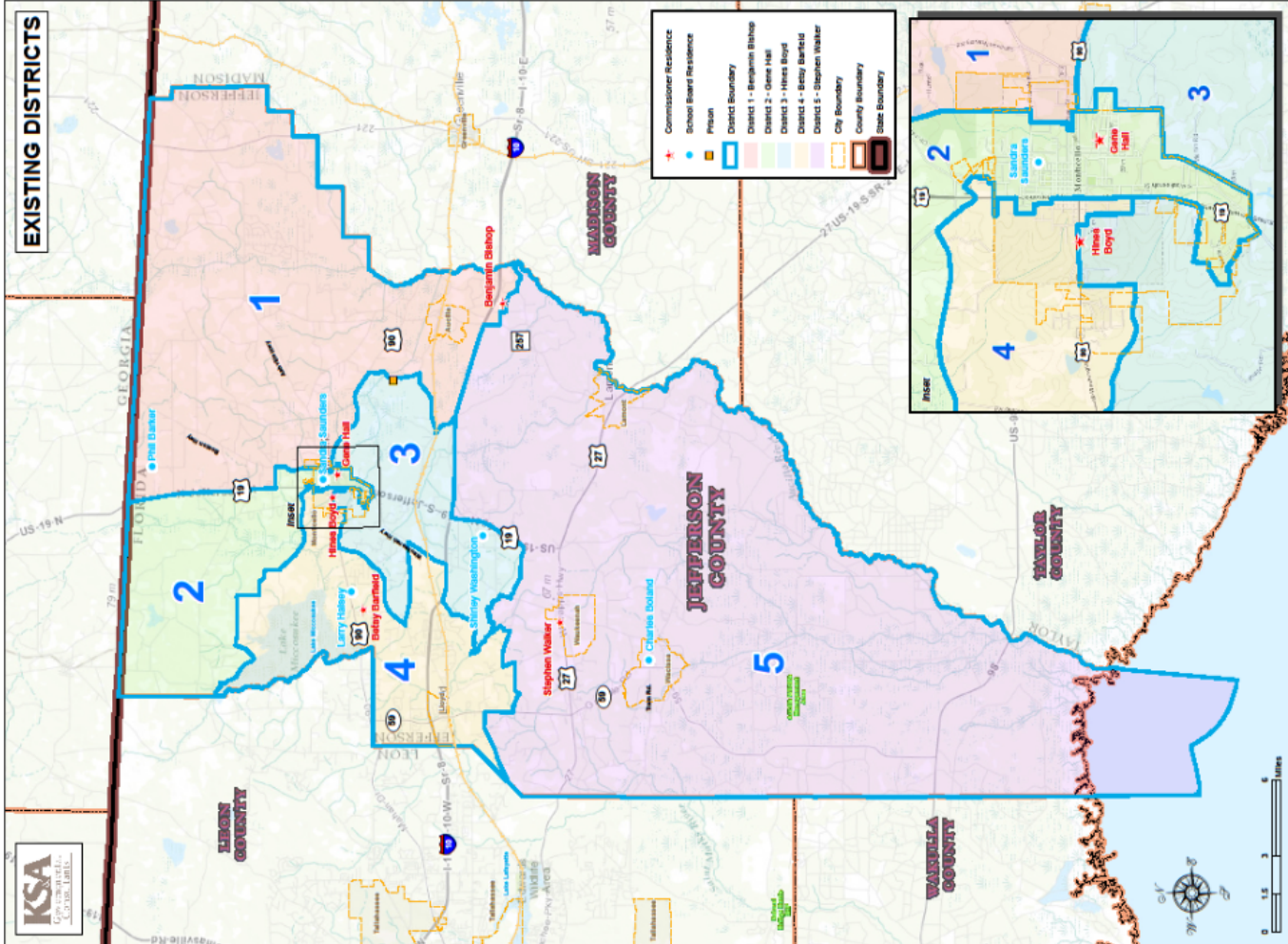
## Existing Districts - 2013

DISTRICT #	AVERAGE (MEAN) POPULATION	ACTUAL POPULATION	DEVIATION	PERCENT DEVIATION	WHITE	PERCENT WHITE	BLACK	PERCENT BLACK	HISPANIC	PERCENT HISPANIC	OTHER	PERCENT OTHER
1	2,952	3,108	156	5.28%	2,104	67.70%	874	28.12%	135	4.34%	130	4.18%
2	2,952	2,739	(213)	-7.22%	1,051	38.37%	1,600	58.42%	67	2.45%	88	3.21%
3	2,952	3,068	116	3.92%	1,663	54.20%	1,299	42.34%	165	5.38%	106	3.46%
4	2,952	3,113	161	5.45%	2,379	76.42%	629	20.21%	106	3.41%	105	3.37%
5	2,952	2,733	(219)	-7.42%	1,715	62.75%	938	34.32%	73	2.67%	80	2.93%

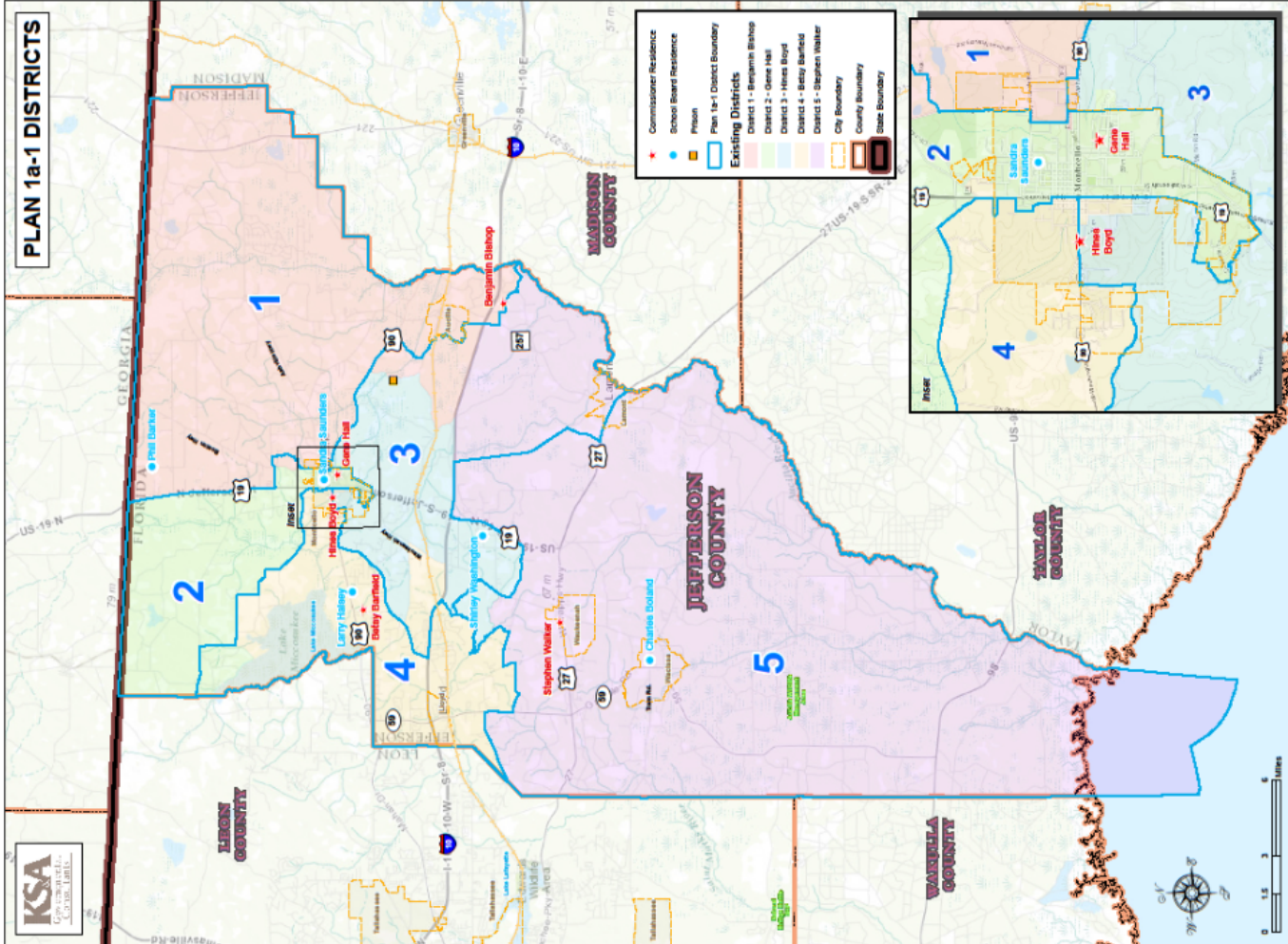
**14,761**







DISTRICT #	AVERAGE (MEAN) POPULATION	ACTUAL POPULATION	DEVIATION	PERCENT DEVIATION	WHITE	BLACK	HISPANIC	PERCENT HISPANIC	OTHER	PERCENT OTHER
1	2721	2665	134.00	4.88%	68.31%	790	129	4.30%	130	4.34%
2	2721	2660	(31.00)	-1.15%	37.49%	1675	73	2.59%	88	3.12%
3	2721	2639	118.00	4.35%	56.29%	747	81	4.27%	83	3.37%
4	2721	2611	(110.00)	-4.21%	76.41%	623	104	3.36%	102	3.32%
5	2721	2612	(108.00)	-4.17%	63.08%	963	75	2.60%	87	3.00%



DISTRICT #	AVERAGE (MEAN) POPULATION	ACTUAL POPULATION	DEVIATION	PERCENT DEVIATION	WHITE	BLACK	HISPANIC	PERCENT HISPANIC	OTHER	PERCENT OTHER
1	2721	2665	134.00	4.88%	68.79%	771	117	4.10%	120	4.20%
2	2721	2660	(31.00)	-1.15%	38.03%	1533	64	2.38%	83	3.00%
3	2721	2639	118.00	4.35%	54.70%	1144	141	4.97%	142	5.00%
4	2721	2611	(110.00)	-4.21%	76.08%	538	68	2.64%	65	2.49%
5	2721	2612	(108.00)	-4.17%	66.10%	804	71	2.72%	80	3.00%



# Case Studies – Jefferson County

## Existing Districts - 2016

<u>Existing (Plan A) Districts</u>							
	WHT	BLK	OTH	HSP	TOT	PCT_BLK	Deviation
District 1	2,078	790	130	129	2,998	26.35	277 9.23
District 2	1,057	1,675	88	73	2,820	59.40	99 3.50
District 3	1,069	747	83	81	1,899	39.34	-822 -43.31
District 4	2,348	623	102	104	3,073	20.27	352 11.44
District 5	1,777	953	87	75	2,817	33.83	96 3.39
Jefferson County	8,329	4,788	490	462	13,607	35.19	
<u>Alternative 1a (Plan 1a) Districts</u>							
	WHT	BLK	OTH	HSP	TOT	PCT_BLK	Deviation
District 1	2,010	773	124	121	2,907	26.59	186 6.38
District 2	1,060	1,538	84	68	2,682	57.35	-39 -1.47
District 3	1,552	1,060	139	135	2,751	38.53	30 1.08
District 4	2,038	535	68	67	2,641	20.26	-80 -3.04
District 5	1,669	882	75	71	2,626	33.59	-95 -3.63
Jefferson County	8,329	4,788	490	462	13,607	35.19	

# Upcoming Challenges in Redistricting



# Upcoming Challenges

- To count or not to count?
- Fair Districts Amendments
- What is a “minority” in the redistricting process?
- 2020 Census

# Count Prison Population?

- Florida (state & federal) prison population = 100,000+
- Impact especially significant in small jurisdictions when redistricting
- Census counts “people” without regard to age or voting status



# Count Prison Population?

- Florida AGO 2001-55 – you must count prison population
- Calvin v. Jefferson County (1<sup>st</sup> DCA, ND Fla - March 19, 2016) - you may not count prison population
- Evenwel v. Abbott (US S/Ct - April 4, 2016) – you [a state] may draw districts based on total population (not registered voters)

# "Fair Districts"

Fair Districts Amendments (2010) to Article III

- Section 20 (Standards for Congressional Districts)
- Section 21 (Standards for Legislative Districts)



# "Fair Districts"

- (a) No apportionment plan or district shall be drawn with the intent to **favor or disfavor a political party or an incumbent**; and districts shall not be drawn with the intent or result of **denying or abridging the equal opportunity of racial or language minorities** to participate in the political process or to diminish their **ability to elect representatives** of their choice; and districts shall **consist of contiguous territory**.
- (b) Unless compliance with the standards in this subsection conflicts with the standards in subsection 1(a) or with federal law, districts shall be as **nearly equal in population** as is practicable; districts shall be **compact**; and districts shall, where feasible, utilize **existing political and geographical boundaries**.

# "Fair Districts"

- Amendments do not apply to cities or counties
- But are reasonable policies or criteria to follow at local level



# What is a “minority”?

VRA enacted during the height of the civil rights movement in 1965

- Enforces rights guaranteed by the 14<sup>th</sup> and 15<sup>th</sup> Amendments to the US Constitution
- Prohibits laws/policies that result in discrimination against racial or language minorities

# What is a “minority”?

- Is a non-Hispanic white community that is a minority of a jurisdiction’s population afforded protections under 14<sup>th</sup> Amendment or VRA?
- TBD...See Baroody v. City of Quincy  
No. 4:20-cv-217-AW-MAF



# The 2020 Census

- First Census conducted in 1790 (US population = 3,929,214)
- 2020 Census
  - ✓ Organizational functions started January 2019
  - ✓ Census Day = April 1, 2020
- Presumed to be correct but check for anomalies





# The 2020 Census – Original Plan

Date	Task
January 2020	Census begins counting remote Alaska
March	Paper instructions sent re: responding online
April 1	Census Day – snapshot of households
Mid-April	Paper Questionnaires mailed
April – June	Census Takers visit group quarters
May - August	Census Takers visit homes not yet responded
December 31	Reapportionment counts to Congress
March 31, 2021	Census Bureau delivers counts to states



# The 2020 Census - Reality

Date	Task
January 2020	Census begins counting remote Alaska <ul style="list-style-type: none"><li>• 1<sup>st</sup> US COVID-19 case - travel ban</li></ul>
March	Paper instructions sent on responding online <ul style="list-style-type: none"><li>• Census suspends field operations</li></ul>
April 1	Census Day – snapshot of households
Mid-April	Paper Questionnaires mailed
April – June	Census Takers visit group quarters <ul style="list-style-type: none"><li>• Field operations reinstated in May</li></ul>
May - August	Census Takers visit homes not yet responding
December 31	Reapportionment counts to Congress <ul style="list-style-type: none"><li>• New target: April 2021</li></ul>
March 31, 2021	Census Bureau delivers counts to states <ul style="list-style-type: none"><li>• New target: September 2021</li></ul>



# 2021 Redistricting Options: #1 – Use (only) 2020 Census Data

Date	Task
July - September	Prepare for redistricting process Acquire software and/or consulting assistance Decide redistricting criteria to be used Determine process and set schedule
September	Review 2020 data Examine need to redistrict Prepare initial maps
October	Discuss initial maps Public Workshops Revise Maps
November	Public Workshops/Revise Maps Notice of Change of Boundaries BCC Hearing
December 2021	BCC Adopts new district maps

# 2021 Redistricting Options: #2 – Use Modified 2010 and 2020 Data

Date	Task
April	Prepare for redistricting process Acquire software and/or consulting assistance Adjust 2010 Data for growth Decide redistricting criteria to be used Determine process and set schedule
May	Examine need to redistrict Prepare initial maps
June – September	Discuss initial maps Public Workshops Revise Maps
October - November	Upload 2020 Data Public Workshops/Revise Maps Notice of Change of Boundaries BCC Hearing
December 2021	BCC Adopts new district maps



# Questions?



Kurt Spitzer

[kurtspitzer@ksanet.net](mailto:kurtspitzer@ksanet.net)

[www.ksanet.net](http://www.ksanet.net)

850-228-6212



**BOARD OF COUNTY COMMISSIONERS  
ESCAMBIA COUNTY, FLORIDA**

---

**MEETING DATE:** 10/5/2021

**DEPARTMENT:** Supervisor of Elections

**ITEM ID:** 2021-3369

**ITEM TYPE:** Recommendation

**FROM:** David Stafford

**SUBJECT:** Recommendation Concerning the Overview and Presentation of Census Results, Redistricting Terms and Redistricting Software

---

**RECOMMENDATION/REQUIRED ACTION:**

That the Board discuss the overview and presentation of Census results, Redistricting Terms and Redistricting Software.

---

**BACKGROUND SUMMARY:**

---

**FISCAL IMPACT:**

---

**LEGAL CONSIDERATIONS/SIGN-OFF:**

---

**POLICY/REQUIREMENT FOR BOARD ACTION:**

---

**IMPLEMENTATION/COORDINATION:**

---

**ATTACHMENTS:**

1. 2020 County\_SB Census Summary
  2. Total Population Data
  3. Race
  4. Voting Age Population Data
  5. Occupancy Status
  6. Race for Population 18 Years and Over
  7. Group Quarters Population by Major Group Quarters Type
  8. H or L and not H or L by Race for the population 18 Years and over
  9. H or L and not H or L by Race
-



<b>Total County Population:</b>	<b>321,905</b>
<b>Ideal District Population:</b>	<b>64,381</b>

## 2020 Census Data – Escambia County, FL

County/School Board District	District 1	District 2	District 3	District 4	District 5
Population	68,158	61,111	61,324	64,641	66,671
White	44,458	39,448	24,775	48,348	49,953
Hispanic or Latino *	4,609	5,231	3,672	4,338	2,943
Black or African American	11,860	12,006	29,040	7,024	9,048
American Indian and Alaska Native	588	420	383	330	634
Asian	3,192	1,897	1,493	2,250	1,207
Native Hawaiian and Other Pacific Islander	107	107	73	82	68
Some other race	1,465	1,984	1,331	1,665	1,042
2 or More **	6,488	5,249	4,229	4,942	4,719

Voting Age Population (VAP)	53654	49411	47518	54237	53325
VAP White	36675	34012	21082	41816	40674
VAP Hispanic	3168	3989	2455	3209	2109
VAP Black	8510	8262	21267	5321	7104
VAP Aggregate Black ***	9313	9034	22077	5779	7531

% VAP White	68.35%	68.83%	44.37%	77.10%	76.28%
% VAP Hispanic	5.90%	8.07%	5.17%	5.92%	3.95%
% VAP Black	15.86%	16.72%	44.76%	9.81%	13.32%
% VAP Aggregate Black ***	17.36%	18.28%	46.46%	10.66%	14.12%

Average +/- of Ideal DP	+3,777	-3,270	-3,057	+588	+1,962
% Average +/- of Ideal DP	+5.87%	-5.08%	-4.75%	+0.91%	+3.05%

\* Hispanic or Latino is considered origin by U.S. Census. Hispanics and Latinos may be of any race and should not be added to racial categories.

\*\* Includes all population of those who listed two or more races.

\*\*\* Aggregate Black VAP is cumulative and includes VAP Black plus VAP Black +1 or more races.



Table: DECENNIALPL2020.P1

Total Population Data		
Label	Escambia County, Florida	Pensacola city, Florida
Total:	321,905	54,312
Population of one race:	296,278	50,485
White alone	206,982	35,935
Black or African American alone	68,978	12,169
American Indian and Alaska Native alone	2,355	233
Asian alone	10,039	1,343
Native Hawaiian and Other Pacific Islander alone	437	49
Some Other Race alone	7,487	756
Population of two or more races:	25,627	3,827
Population of two races:	23,864	3,556
White; Black or African American	4,231	600
White; American Indian and Alaska Native	5,994	802
White; Asian	3,455	496
White; Native Hawaiian and Other Pacific	270	37
White; Some Other Race	8,009	1,383
Black or African American; American Indian and Alaska Native	518	84
Black or African American; Asian	385	30
Black or African American; Native Hawaiian and Other Pacific Islander	62	8
Black or African American; Some Other Race	574	73
American Indian and Alaska Native; Asian	23	6
American Indian and Alaska Native; Native Hawaiian and Other Pacific Islander	5	1
American Indian and Alaska Native; Some Other	81	6
Asian; Native Hawaiian and Other Pacific Islander	136	17
Asian; Some Other Race	95	10
Native Hawaiian and Other Pacific Islander; Some Other Race	26	3
Population of three races:	1,573	248
White; Black or African American; American Indian and Alaska Native	375	36
White; Black or African American; Asian	235	37
White; Black or African American; Native Hawaiian and Other Pacific Islander	40	2
White; Black or African American; Some Other	211	40
White; American Indian and Alaska Native; Asian	168	22
White; American Indian and Alaska Native; Native Hawaiian and Other Pacific Islander	19	5
White; American Indian and Alaska Native; Some Other Race	246	57



Table: DECENNIALPL2020.P1

Label	Escambia County, Florida	Pensacola city, Florida
White; Asian; Native Hawaiian and Other Pacific Islander	112	16
White; Asian; Some Other Race	91	23
White; Native Hawaiian and Other Pacific Islander; Some Other Race	20	6
Black or African American; American Indian and Alaska Native; Asian	13	3
Black or African American; American Indian and Alaska Native; Native Hawaiian and Other Pacific Islander	4	0
Black or African American; American Indian and Alaska Native; Some Other Race	7	0
Black or African American; Asian; Native Hawaiian and Other Pacific Islander	15	0
Black or African American; Asian; Some Other Race	6	0
Black or African American; Native Hawaiian and Other Pacific Islander; Some Other Race	0	0
American Indian and Alaska Native; Asian; Native Hawaiian and Other Pacific Islander	0	0
American Indian and Alaska Native; Asian; Some Other Race	9	1
American Indian and Alaska Native; Native Hawaiian and Other Pacific Islander; Some Other Race	0	0
Asian; Native Hawaiian and Other Pacific Islander; Some Other Race	2	0
Population of four races:	169	21
White; Black or African American; American Indian and Alaska Native; Asian	39	4
White; Black or African American; American Indian and Alaska Native; Native Hawaiian and Other Pacific Islander	2	0
White; Black or African American; American Indian and Alaska Native; Some Other Race	51	7
White; Black or African American; Asian; Native Hawaiian and Other Pacific Islander	21	4
White; Black or African American; Asian; Some Other Race	14	3
White; Black or African American; Native Hawaiian and Other Pacific Islander; Some Other Race	5	0

Table: DECENNIALPL2020.P1

Label	Escambia County, Florida	Pensacola city, Florida
White; American Indian and Alaska Native; Asian; Native Hawaiian and Other Pacific Islander	17	1
White; American Indian and Alaska Native; Asian; Some Other Race	1	0
White; American Indian and Alaska Native; Native Hawaiian and Other Pacific Islander; Some Other Race	3	1
White; Asian; Native Hawaiian and Other Pacific Islander; Some Other Race	13	1
Black or African American; American Indian and Alaska Native; Asian; Native Hawaiian and Other Pacific Islander	2	0
Black or African American; American Indian and Alaska Native; Asian; Some Other Race	1	0
Black or African American; American Indian and Alaska Native; Native Hawaiian and Other Pacific Islander; Some Other Race	0	0
Black or African American; Asian; Native Hawaiian and Other Pacific Islander; Some Other Race	0	0
American Indian and Alaska Native; Asian; Native Hawaiian and Other Pacific Islander; Some Other Race	0	0
Population of five races:	17	2
White; Black or African American; American Indian and Alaska Native; Asian; Native Hawaiian and Other Pacific Islander	7	1
White; Black or African American; American Indian and Alaska Native; Asian; Some Other Race	10	1
White; Black or African American; American Indian and Alaska Native; Native Hawaiian and Other Pacific Islander; Some Other Race	0	0
White; Black or African American; Asian; Native Hawaiian and Other Pacific Islander; Some Other Race	0	0
White; American Indian and Alaska Native; Asian; Native Hawaiian and Other Pacific Islander; Some Other Race	0	0
Black or African American; American Indian and Alaska Native; Asian; Native Hawaiian and Other Pacific Islander; Some Other Race	0	0



Table: DECENNIALPL2020.P1

Label	Escambia County, Florida	Pensacola city, Florida
Population of six races:	4	0
White; Black or African American; American Indian and Alaska Native; Asian; Native Hawaiian and Other Pacific Islander; Some Other Race	4	0

<b>Race</b>	
<b>Label</b>	<b>Escambia County, Florida</b>
Total:	321,905
Population of one race:	296,278
White alone	206,982
Black or African American alone	68,978
American Indian and Alaska Native alone	2,355
Asian alone	10,039
Native Hawaiian and Other Pacific Islander alone	437
Some Other Race alone	7,487
Population of two or more races:	25,627
Population of two races:	23,864
White; Black or African American	4,231
White; American Indian and Alaska Native	5,994
White; Asian	3,455
White; Native Hawaiian and Other Pacific Islander	270
White; Some Other Race	8,009
Black or African American; American Indian and Alaska Native	518
Black or African American; Asian	385
Black or African American; Native Hawaiian and Other Pacific Islander	62
Black or African American; Some Other Race	574
American Indian and Alaska Native; Asian	23
American Indian and Alaska Native; Native Hawaiian and Other Pacific Islander	5
American Indian and Alaska Native; Some Other Race	81
Asian; Native Hawaiian and Other Pacific Islander	136
Asian; Some Other Race	95
Native Hawaiian and Other Pacific Islander; Some Other Race	26
Population of three races:	1,573
White; Black or African American; American Indian and Alaska Native	375
White; Black or African American; Asian	235
White; Black or African American; Native Hawaiian and Other Pacific Islander	40
White; Black or African American; Some Other Race	211
White; American Indian and Alaska Native; Asian	168
White; American Indian and Alaska Native; Native Hawaiian and Other Pacific Islander	19
White; American Indian and Alaska Native; Some Other Race	246
White; Asian; Native Hawaiian and Other Pacific Islander	112
White; Asian; Some Other Race	91
White; Native Hawaiian and Other Pacific Islander; Some Other Race	20
Black or African American; American Indian and Alaska Native; Asian	13
Black or African American; American Indian and Alaska Native; Native Hawaiian and Other Pacific Islander	4
Black or African American; American Indian and Alaska Native; Some Other Race	7
Black or African American; Asian; Native Hawaiian and Other Pacific Islander	15
Black or African American; Asian; Some Other Race	6



Table: DECENNIALPL2020.P1

Label	Escambia County, Florida
Black or African American; Native Hawaiian and Other Pacific Islander; Some Other	0
American Indian and Alaska Native; Asian; Native Hawaiian and Other Pacific Islander	0
American Indian and Alaska Native; Asian; Some Other Race	9
American Indian and Alaska Native; Native Hawaiian and Other Pacific Islander; Some	0
Asian; Native Hawaiian and Other Pacific Islander; Some Other Race	2
Population of four races:	169
White; Black or African American; American Indian and Alaska Native; Asian	39
White; Black or African American; American Indian and Alaska Native; Native Hawaiian and Other Pacific Islander	2
White; Black or African American; American Indian and Alaska Native; Some Other	51
White; Black or African American; Asian; Native Hawaiian and Other Pacific Islander	21
White; Black or African American; Asian; Some Other Race	14
White; Black or African American; Native Hawaiian and Other Pacific Islander; Some	5
White; American Indian and Alaska Native; Asian; Native Hawaiian and Other Pacific	17
White; American Indian and Alaska Native; Asian; Some Other Race	1
White; American Indian and Alaska Native; Native Hawaiian and Other Pacific Islander; Some Other Race	3
White; Asian; Native Hawaiian and Other Pacific Islander; Some Other Race	13
Black or African American; American Indian and Alaska Native; Asian; Native Hawaiian and Other Pacific Islander	2
Black or African American; American Indian and Alaska Native; Asian; Some Other	1
Black or African American; American Indian and Alaska Native; Native Hawaiian and Other Pacific Islander; Some Other Race	0
Black or African American; Asian; Native Hawaiian and Other Pacific Islander; Some	0
American Indian and Alaska Native; Asian; Native Hawaiian and Other Pacific Islander; Some Other Race	0
Population of five races:	17
White; Black or African American; American Indian and Alaska Native; Asian; Native Hawaiian and Other Pacific Islander	7
White; Black or African American; American Indian and Alaska Native; Asian; Some	10
White; Black or African American; American Indian and Alaska Native; Native Hawaiian and Other Pacific Islander; Some Other Race	0
White; Black or African American; Asian; Native Hawaiian and Other Pacific Islander; Some Other Race	0
White; American Indian and Alaska Native; Asian; Native Hawaiian and Other Pacific Islander; Some Other Race	0
Black or African American; American Indian and Alaska Native; Asian; Native Hawaiian and Other Pacific Islander; Some Other Race	0
Population of six races:	4
White; Black or African American; American Indian and Alaska Native; Asian; Native Hawaiian and Other Pacific Islander; Some Other Race	4

Voting Age Population Data		
Label	Escambia County, Florida	Pensacola city, Florida
Total:	258,145	44,583
Population of one race:	241,197	41,944
White alone	174,259	30,776
Black or African American alone	50,464	9,226
American Indian and Alaska Native alone	1,992	195
Asian alone	8,447	1,119
Native Hawaiian and Other Pacific Islander alone	344	42
Some Other Race alone	5,691	586
Population of two or more races:	16,948	2,639
Population of two races:	15,934	2,471
White; Black or African American	1,696	263
White; American Indian and Alaska Native	4,791	655
White; Asian	2,032	307
White; Native Hawaiian and Other Pacific Islander	168	23
White; Some Other Race	5,973	1,059
Black or African American; American Indian and Alaska Native	385	59
Black or African American; Asian	246	17
Black or African American; Native Hawaiian and Other Pacific Islander	26	5
Black or African American; Some Other Race	360	51
American Indian and Alaska Native; Asian	22	5
American Indian and Alaska Native; Native Hawaiian and Other Pacific Islander	3	1
American Indian and Alaska Native; Some Other Race	47	3
Asian; Native Hawaiian and Other Pacific Islander	111	15
Asian; Some Other Race	54	5
Native Hawaiian and Other Pacific Islander; Some Other Race	20	3
Population of three races:	892	155
White; Black or African American; American Indian and Alaska Native	223	32
White; Black or African American; Asian	95	25
White; Black or African American; Native Hawaiian and Other Pacific Islander	14	0
White; Black or African American; Some Other Race	101	17
White; American Indian and Alaska Native; Asian	94	11
White; American Indian and Alaska Native; Native Hawaiian and Other Pacific Islander	9	3
White; American Indian and Alaska Native; Some Other Race	175	36



Table: DECENNIALPL2020.P3

Label	Escambia County, Florida	Pensacola city, Florida
White; Asian; Native Hawaiian and Other Pacific Islander	76	13
White; Asian; Some Other Race	46	13
White; Native Hawaiian and Other Pacific Islander; Some Other Race	15	3
Black or African American; American Indian and Alaska Native; Asian	5	1
Black or African American; American Indian and Alaska Native; Native Hawaiian and Other Pacific Islander	4	0
Black or African American; American Indian and Alaska Native; Some Other Race	7	0
Black or African American; Asian; Native Hawaiian and Other Pacific Islander	15	0
Black or African American; Asian; Some Other Race	4	0
Black or African American; Native Hawaiian and Other Pacific Islander; Some Other Race	0	0
American Indian and Alaska Native; Asian; Native Hawaiian and Other Pacific Islander	0	0
American Indian and Alaska Native; Asian; Some Other Race	7	1
American Indian and Alaska Native; Native Hawaiian and Other Pacific Islander; Some Other Race	0	0
Asian; Native Hawaiian and Other Pacific Islander; Some Other Race	2	0
Population of four races:	103	11
White; Black or African American; American Indian and Alaska Native; Asian	11	0
White; Black or African American; American Indian and Alaska Native; Native Hawaiian and Other Pacific Islander	1	0
White; Black or African American; American Indian and Alaska Native; Some Other Race	41	7
White; Black or African American; Asian; Native Hawaiian and Other Pacific Islander	4	0
White; Black or African American; Asian; Some Other Race	10	2
White; Black or African American; Native Hawaiian and Other Pacific Islander; Some Other Race	4	0
White; American Indian and Alaska Native; Asian; Native Hawaiian and Other Pacific Islander	15	1

Table: DECENNIALPL2020.P3

Label	Escambia County, Florida	Pensacola city, Florida
White; American Indian and Alaska Native; Asian; Some Other Race	1	0
White; American Indian and Alaska Native; Native Hawaiian and Other Pacific Islander; Some Other Race	0	0
White; Asian; Native Hawaiian and Other Pacific Islander; Some Other Race	13	1
Black or African American; American Indian and Alaska Native; Asian; Native Hawaiian and Other Pacific Islander	2	0
Black or African American; American Indian and Alaska Native; Asian; Some Other Race	1	0
Black or African American; American Indian and Alaska Native; Native Hawaiian and Other Pacific Islander; Some Other Race	0	0
Black or African American; Asian; Native Hawaiian and Other Pacific Islander; Some Other Race	0	0
American Indian and Alaska Native; Asian; Native Hawaiian and Other Pacific Islander; Some Other Race	0	0
Population of five races:	15	2
White; Black or African American; American Indian and Alaska Native; Asian; Native Hawaiian and Other Pacific Islander	7	1
White; Black or African American; American Indian and Alaska Native; Asian; Some Other Race	8	1
White; Black or African American; American Indian and Alaska Native; Native Hawaiian and Other Pacific Islander; Some Other Race	0	0
White; Black or African American; Asian; Native Hawaiian and Other Pacific Islander; Some Other Race	0	0
White; American Indian and Alaska Native; Asian; Native Hawaiian and Other Pacific Islander; Some Other Race	0	0
Black or African American; American Indian and Alaska Native; Asian; Native Hawaiian and Other Pacific Islander; Some Other Race	0	0
Population of six races:	4	0
White; Black or African American; American Indian and Alaska Native; Asian; Native Hawaiian and Other Pacific Islander; Some Other Race	4	0



Table: DECENNIALPL2020.H1

Occupancy Status	
Label	Escambia County, Florida
Total:	145,390
Occupied	128,160
Vacant	17,230

Race for Population 18 Years and Over	
Label	Escambia County, Florida
Total:	258,145
Population of one race:	241,197
White alone	174,259
Black or African American alone	50,464
American Indian and Alaska Native alone	1,992
Asian alone	8,447
Native Hawaiian and Other Pacific Islander alone	344
Some Other Race alone	5,691
Population of two or more races:	16,948
Population of two races:	15,934
White; Black or African American	1,696
White; American Indian and Alaska Native	4,791
White; Asian	2,032
White; Native Hawaiian and Other Pacific Islander	168
White; Some Other Race	5,973
Black or African American; American Indian and Alaska Native	385
Black or African American; Asian	246
Black or African American; Native Hawaiian and Other Pacific Islander	26
Black or African American; Some Other Race	360
American Indian and Alaska Native; Asian	22
American Indian and Alaska Native; Native Hawaiian and Other Pacific Islander	3
American Indian and Alaska Native; Some Other Race	47
Asian; Native Hawaiian and Other Pacific Islander	111
Asian; Some Other Race	54
Native Hawaiian and Other Pacific Islander; Some Other Race	20
Population of three races:	892
White; Black or African American; American Indian and Alaska Native	223
White; Black or African American; Asian	95
White; Black or African American; Native Hawaiian and Other Pacific Islander	14
White; Black or African American; Some Other Race	101
White; American Indian and Alaska Native; Asian	94
White; American Indian and Alaska Native; Native Hawaiian and Other Pacific Islander	9
White; American Indian and Alaska Native; Some Other Race	175
White; Asian; Native Hawaiian and Other Pacific Islander	76
White; Asian; Some Other Race	46
White; Native Hawaiian and Other Pacific Islander; Some Other Race	15
Black or African American; American Indian and Alaska Native; Asian	5
Black or African American; American Indian and Alaska Native; Native Hawaiian and Other Pacific Islander	4

Table: DECENNIALPL2020.P3

Label	Escambia County, Florida
Black or African American; American Indian and Alaska Native; Some Other Race	7
Black or African American; Asian; Native Hawaiian and Other Pacific Islander	15
Black or African American; Asian; Some Other Race	4
Black or African American; Native Hawaiian and Other Pacific Islander; Some Other Race	0
American Indian and Alaska Native; Asian; Native Hawaiian and Other Pacific Islander	0
American Indian and Alaska Native; Asian; Some Other Race	7
American Indian and Alaska Native; Native Hawaiian and Other Pacific Islander; Some Other Race	0
Asian; Native Hawaiian and Other Pacific Islander; Some Other Race	2
Population of four races:	103
White; Black or African American; American Indian and Alaska Native; Asian	11
White; Black or African American; American Indian and Alaska Native; Native Hawaiian and Other Pacific Islander	1
White; Black or African American; American Indian and Alaska Native; Some Other Race	41
White; Black or African American; Asian; Native Hawaiian and Other Pacific Islander	4
White; Black or African American; Asian; Some Other Race	10
White; Black or African American; Native Hawaiian and Other Pacific Islander; Some Other Race	4
White; American Indian and Alaska Native; Asian; Native Hawaiian and Other Pacific Islander	15
White; American Indian and Alaska Native; Asian; Some Other Race	1
White; American Indian and Alaska Native; Native Hawaiian and Other Pacific Islander; Some Other Race	0
White; Asian; Native Hawaiian and Other Pacific Islander; Some Other Race	13
Black or African American; American Indian and Alaska Native; Asian; Native Hawaiian and Other Pacific Islander	2
Black or African American; American Indian and Alaska Native; Asian; Some Other Race	1
Black or African American; American Indian and Alaska Native; Native Hawaiian and Other Pacific Islander; Some Other Race	0
Black or African American; Asian; Native Hawaiian and Other Pacific Islander; Some Other Race	0
American Indian and Alaska Native; Asian; Native Hawaiian and Other Pacific Islander; Some Other Race	0
Population of five races:	15
White; Black or African American; American Indian and Alaska Native; Asian; Native Hawaiian and Other Pacific Islander	7



Table: DECENNIALPL2020.P3

Label	Escambia County, Florida
White; Black or African American; American Indian and Alaska Native; Asian; Some Other Race	8
White; Black or African American; American Indian and Alaska Native; Native Hawaiian and Other Pacific Islander; Some Other Race	0
White; Black or African American; Asian; Native Hawaiian and Other Pacific Islander; Some Other Race	0
White; American Indian and Alaska Native; Asian; Native Hawaiian and Other Pacific Islander; Some Other Race	0
Black or African American; American Indian and Alaska Native; Asian; Native Hawaiian and Other Pacific Islander; Some Other Race	0
Population of six races:	4
White; Black or African American; American Indian and Alaska Native; Asian; Native Hawaiian and Other Pacific Islander; Some Other Race	4

Group Quarters Population by Major Group Quarters Type	
Label	Escambia County,
Total:	18,716
Institutionalized population:	6,562
Correctional facilities for adults	3,282
Juvenile facilities	100
Nursing facilities/Skilled-nursing facilities	3,180
Other institutional facilities	0
Noninstitutionalized population:	12,154
College/University student housing	4,134
Military quarters	5,937
Other noninstitutional facilities	2,083

<b>Hispanic or Latino , and not Hispanic or Latino by Race for the Population 18 Years and Over</b>	
<b>Label</b>	<b>Escambia County, Florida</b>
Total:	258,145
Hispanic or Latino	14,930
Not Hispanic or Latino:	243,215
Population of one race:	231,531
White alone	169,960
Black or African American alone	49,934
American Indian and Alaska Native alone	1,727
Asian alone	8,325
Native Hawaiian and Other Pacific Islander alone	327
Some Other Race alone	1,258
Population of two or more races:	11,684
Population of two races:	11,032
White; Black or African American	1,611
White; American Indian and Alaska Native	4,624
White; Asian	1,963
White; Native Hawaiian and Other Pacific Islander	154
White; Some Other Race	1,714
Black or African American; American Indian and Alaska Native	362
Black or African American; Asian	231
Black or African American; Native Hawaiian and Other Pacific Islander	26
Black or African American; Some Other Race	180
American Indian and Alaska Native; Asian	20
American Indian and Alaska Native; Native Hawaiian and Other Pacific Islander	3
American Indian and Alaska Native; Some Other Race	1
Asian; Native Hawaiian and Other Pacific Islander	108
Asian; Some Other Race	29
Native Hawaiian and Other Pacific Islander; Some Other Race	6
Population of three races:	596
White; Black or African American; American Indian and Alaska Native	198
White; Black or African American; Asian	90
White; Black or African American; Native Hawaiian and Other Pacific Islander	13
White; Black or African American; Some Other Race	53
White; American Indian and Alaska Native; Asian	86
White; American Indian and Alaska Native; Native Hawaiian and Other Pacific Islander	9
White; American Indian and Alaska Native; Some Other Race	28
White; Asian; Native Hawaiian and Other Pacific Islander	68
White; Asian; Some Other Race	13



Table: DECENNIALPL2020.P4

Label	Escambia County, Florida
White; Native Hawaiian and Other Pacific Islander; Some Other Race	6
Black or African American; American Indian and Alaska Native; Asian	1
Black or African American; American Indian and Alaska Native; Native Hawaiian and Other Pacific Islander	4
Black or African American; American Indian and Alaska Native; Some Other Race	7
Black or African American; Asian; Native Hawaiian and Other Pacific Islander	15
Black or African American; Asian; Some Other Race	4
Black or African American; Native Hawaiian and Other Pacific Islander; Some Other Race	0
American Indian and Alaska Native; Asian; Native Hawaiian and Other Pacific Islander	0
American Indian and Alaska Native; Asian; Some Other Race	0
American Indian and Alaska Native; Native Hawaiian and Other Pacific Islander; Some Other Race	0
Asian; Native Hawaiian and Other Pacific Islander; Some Other Race	1
Population of four races:	48
White; Black or African American; American Indian and Alaska Native; Asian	7
White; Black or African American; American Indian and Alaska Native; Native Hawaiian and Other Pacific Islander	0
White; Black or African American; American Indian and Alaska Native; Some Other Race	13
White; Black or African American; Asian; Native Hawaiian and Other Pacific Islander	4
White; Black or African American; Asian; Some Other Race	3
White; Black or African American; Native Hawaiian and Other Pacific Islander; Some Other Race	0
White; American Indian and Alaska Native; Asian; Native Hawaiian and Other Pacific Islander	15
White; American Indian and Alaska Native; Asian; Some Other Race	0
White; American Indian and Alaska Native; Native Hawaiian and Other Pacific Islander; Some Other Race	0
White; Asian; Native Hawaiian and Other Pacific Islander; Some Other Race	4
Black or African American; American Indian and Alaska Native; Asian; Native Hawaiian and Other Pacific Islander	2
Black or African American; American Indian and Alaska Native; Asian; Some Other Race	0
Black or African American; American Indian and Alaska Native; Native Hawaiian and Other Pacific Islander; Some Other Race	0
Black or African American; Asian; Native Hawaiian and Other Pacific Islander; Some Other Race	0
American Indian and Alaska Native; Asian; Native Hawaiian and Other Pacific Islander; Some Other Race	0

Table: DECENNIALPL2020.P4

Label	Escambia County, Florida
Population of five races:	7
White; Black or African American; American Indian and Alaska Native; Asian; Native Hawaiian and Other Pacific Islander	7
White; Black or African American; American Indian and Alaska Native; Asian; Some Other Race	0
White; Black or African American; American Indian and Alaska Native; Native Hawaiian and Other Pacific Islander; Some Other Race	0
White; Black or African American; Asian; Native Hawaiian and Other Pacific Islander; Some Other Race	0
White; American Indian and Alaska Native; Asian; Native Hawaiian and Other Pacific Islander; Some Other Race	0
Black or African American; American Indian and Alaska Native; Asian; Native Hawaiian and Other Pacific Islander; Some Other Race	0
Population of six races:	1
White; Black or African American; American Indian and Alaska Native; Asian; Native Hawaiian and Other Pacific Islander; Some Other Race	1

<b>Hispanic or Latino, and not Hispanic or Latino by Race</b>	
<b>Label</b>	<b>Escambia County, Florida</b>
Total:	321,905
Hispanic or Latino	20,793
Not Hispanic or Latino:	301,112
Population of one race:	283,155
White alone	200,962
Black or African American alone	68,148
American Indian and Alaska Native alone	1,998
Asian alone	9,866
Native Hawaiian and Other Pacific Islander alone	410
Some Other Race alone	1,771
Population of two or more races:	17,957
Population of two races:	16,821
White; Black or African American	3,991
White; American Indian and Alaska Native	5,701
White; Asian	3,293
White; Native Hawaiian and Other Pacific Islander	249
White; Some Other Race	2,191
Black or African American; American Indian and Alaska Native	495
Black or African American; Asian	359
Black or African American; Native Hawaiian and Other Pacific Islander	62
Black or African American; Some Other Race	275
American Indian and Alaska Native; Asian	20
American Indian and Alaska Native; Native Hawaiian and Other Pacific Islander	5
American Indian and Alaska Native; Some Other Race	8
Asian; Native Hawaiian and Other Pacific Islander	133
Asian; Some Other Race	33
Native Hawaiian and Other Pacific Islander; Some Other Race	6
Population of three races:	1,040
White; Black or African American; American Indian and Alaska Native	312
White; Black or African American; Asian	217
White; Black or African American; Native Hawaiian and Other Pacific Islander	39
White; Black or African American; Some Other Race	94
White; American Indian and Alaska Native; Asian	148
White; American Indian and Alaska Native; Native Hawaiian and Other Pacific Islander	19
White; American Indian and Alaska Native; Some Other Race	30
White; Asian; Native Hawaiian and Other Pacific Islander	104



Table: DECENNIALPL2020.P2

Label	Escambia County, Florida
White; Asian; Some Other Race	29
White; Native Hawaiian and Other Pacific Islander; Some Other Race	6
Black or African American; American Indian and Alaska Native; Asian	9
Black or African American; American Indian and Alaska Native; Native Hawaiian and Other Pacific Islander	4
Black or African American; American Indian and Alaska Native; Some Other Race	7
Black or African American; Asian; Native Hawaiian and Other Pacific Islander	15
Black or African American; Asian; Some Other Race	6
Black or African American; Native Hawaiian and Other Pacific Islander; Some Other Race	0
American Indian and Alaska Native; Asian; Native Hawaiian and Other Pacific Islander	0
American Indian and Alaska Native; Asian; Some Other Race	0
American Indian and Alaska Native; Native Hawaiian and Other Pacific Islander; Some Other Race	0
Asian; Native Hawaiian and Other Pacific Islander; Some Other Race	1
Population of four races:	86
White; Black or African American; American Indian and Alaska Native; Asian	27
White; Black or African American; American Indian and Alaska Native; Native Hawaiian and Other Pacific Islander	0
White; Black or African American; American Indian and Alaska Native; Some Other Race	14
White; Black or African American; Asian; Native Hawaiian and Other Pacific Islander	15
White; Black or African American; Asian; Some Other Race	3
White; Black or African American; Native Hawaiian and Other Pacific Islander; Some Other Race	1
White; American Indian and Alaska Native; Asian; Native Hawaiian and Other Pacific Islander	17
White; American Indian and Alaska Native; Asian; Some Other Race	0
White; American Indian and Alaska Native; Native Hawaiian and Other Pacific Islander; Some Other Race	3
White; Asian; Native Hawaiian and Other Pacific Islander; Some Other Race	4
Black or African American; American Indian and Alaska Native; Asian; Native Hawaiian and Other Pacific Islander	2
Black or African American; American Indian and Alaska Native; Asian; Some Other Race	0
Black or African American; American Indian and Alaska Native; Native Hawaiian and Other Pacific Islander; Some Other Race	0
Black or African American; Asian; Native Hawaiian and Other Pacific Islander; Some Other Race	0

Table: DECENNIALPL2020.P2

Label	Escambia County, Florida
American Indian and Alaska Native; Asian; Native Hawaiian and Other Pacific Islander; Some Other Race	0
Population of five races:	9
White; Black or African American; American Indian and Alaska Native; Asian; Native Hawaiian and Other Pacific Islander	7
White; Black or African American; American Indian and Alaska Native; Asian; Some Other Race	2
White; Black or African American; American Indian and Alaska Native; Native Hawaiian and Other Pacific Islander; Some Other Race	0
White; Black or African American; Asian; Native Hawaiian and Other Pacific Islander; Some Other Race	0
White; American Indian and Alaska Native; Asian; Native Hawaiian and Other Pacific Islander; Some Other Race	0
Black or African American; American Indian and Alaska Native; Asian; Native Hawaiian and Other Pacific Islander; Some Other Race	0
Population of six races:	1
White; Black or African American; American Indian and Alaska Native; Asian; Native Hawaiian and Other Pacific Islander; Some Other Race	1